

## HURRICANE PROTECTION PROJECT

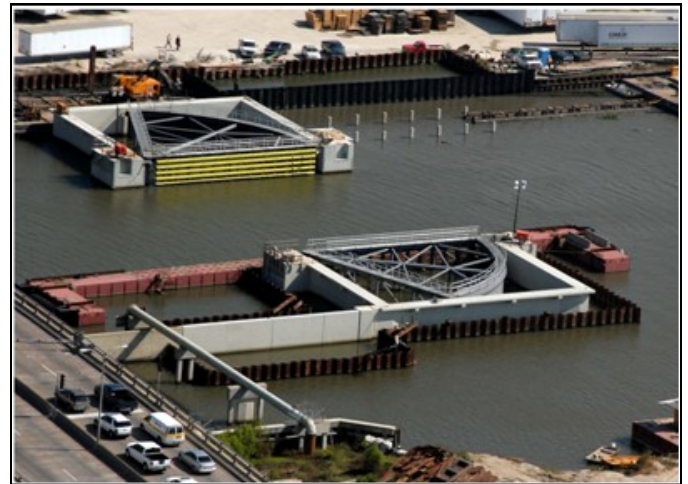
### WESTWEGO TO HARVEY CANAL, WBV-16

### BAYOU SEGNETTE COMPLEX

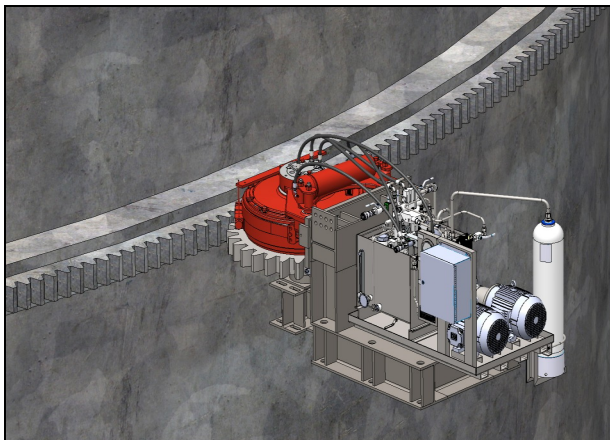
Jefferson Parish, Louisiana

**Description:** AIT has been awarded the contract to engineer, manufacture and commission the Operating Machinery for the Sector Gate. The scope of this work includes the Hydraulic Power Units with Electrical Enclosures, Hydraulic Motor Assemblies and Drive Gear Supports. AIT will also be on site to install the hydraulic plumbing as well as to flush and test the hydraulic equipment .

A 60-foot-wide sector gate will be built across the Bayou Segnette navigation channel near the Company Canal entrance. The gate will connect to a 1,200-foot-long earthen levee on an existing manmade island just north of the La-palco Boulevard overpass.



The sector gate will replace a temporary barge gate the corps built in 2007 after determining the Company Canal floodwall was in danger of toppling because of weak soils near the Westwego seafood market. In addition to lowering flood risk in the area, the new gate will create a safe harbor in the Company Canal for fishing vessels during storms.



**Sector Gate Operating Machinery**

#### **Project Specifications:**

Hydraulic Power Unit:	20 Gallon Stainless Steel Reservoir 7.5 HP 3 Phase Motor with 7cc Gear Pump and all Stainless Steel tubing and fittings
Hydraulic Motor Assemblies:	563.9 cu.in/rev displacement 80 RPM, 3,600 PSI max pressure

#### **CONTACT US >>**

90 Precision Drive Ph: (800) 254-3131  
Shirley, NY 11967 Fx: (631) 234-3283

[www.aitzone.com](http://www.aitzone.com)